

48th ANNUAL MEETING

AMERICAN SOCIETY OF NEUROIMAGING

PROGRAM AT A GLANCE

Neurovascular Ultrasound

Structural Neuroimaging

**APP/Trainees/
Early Career Physicians**

Friday, January 17, 2025

8:00 - 9:00 a.m.

Breakfast with Exhibitors

9:00 a.m.

Welcome & Opening Keynote Speaker (0.75 CME Credits)

10:00 a.m. - 12:15 p.m.

Neurovascular Ultrasound 1
(2.25 CME Credits)

Cognitive Impairment
(2.25 CME Credits)

12:15 - 1:15 p.m.

Eli Lilly & Company Sponsored Lunch 1



1:45 - 4:00 p.m.

Neurovascular Ultrasound 2
(2.25 CME Credits)

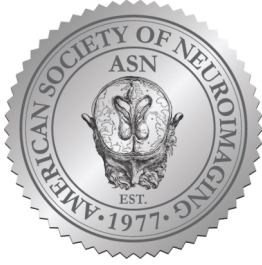
Headache
(2.25 CME Credits)

4:00 p.m.

President's Reception & Poster Presentations

5:30 - 7:30 p.m.

TCD Workshop 1
(2.0 CME Credits)



48th ANNUAL MEETING

AMERICAN SOCIETY OF NEUROIMAGING

PROGRAM AT A GLANCE

Neurovascular Ultrasound	Structural Neuroimaging	APP/Trainees/ Early Career Physicians
--------------------------	-------------------------	--

Saturday, January 18, 2025

7:00 - 9:00 a.m.

TCD Workshop 2 (2.0 CME Credits)


8:00 - 9:00 a.m.

Breakfast with Exhibitors

9:00 - 11:00 a.m.

Neurovascular Ultrasound 3 (2.0 CME Credits)	Neurointerventional Imaging (2.0 CME Credits)
---	--

11:30 a.m. - 12:30 p.m.

Amgen Sponsored Lunch 2	
-------------------------	---


12:45 - 3:45 p.m.

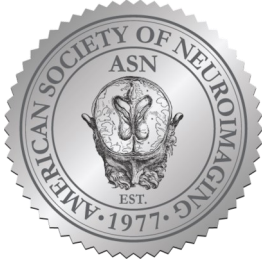
Neurovascular Ultrasound 4 (3.0 CME Credits)	Demyelinating Diseases (3.0 CME Credits)	Structural Neuroimaging (1.25 CME Credits)
---	---	---

4:00 - 5:00 p.m.

Jeopardy, Reception, & Silent Auction

6:00 p.m.

Night Out in Dallas Sponsored by the DENT Institute	
---	---



48th ANNUAL MEETING

AMERICAN SOCIETY OF NEUROIMAGING

PROGRAM AT A GLANCE

Neurovascular Ultrasound	Structural Neuroimaging	APP/Trainees/ Early Career Physicians
--------------------------	-------------------------	--

Sunday, January 19, 2025

7:00 - 8:00 a.m.

Breakfast

8:30 a.m. - 12:30 p.m.

Neurovascular Ultrasound 5 (4.0 CME Credits)	Structural Neuroimaging (4.0 CME Credits)
---	--

32.5 Total CME Credits
18.25 Ultrasound CME Credits (with workshops)
14.25 Structural Neuroimaging CME Credits
5.25 APP-specific CME Credits